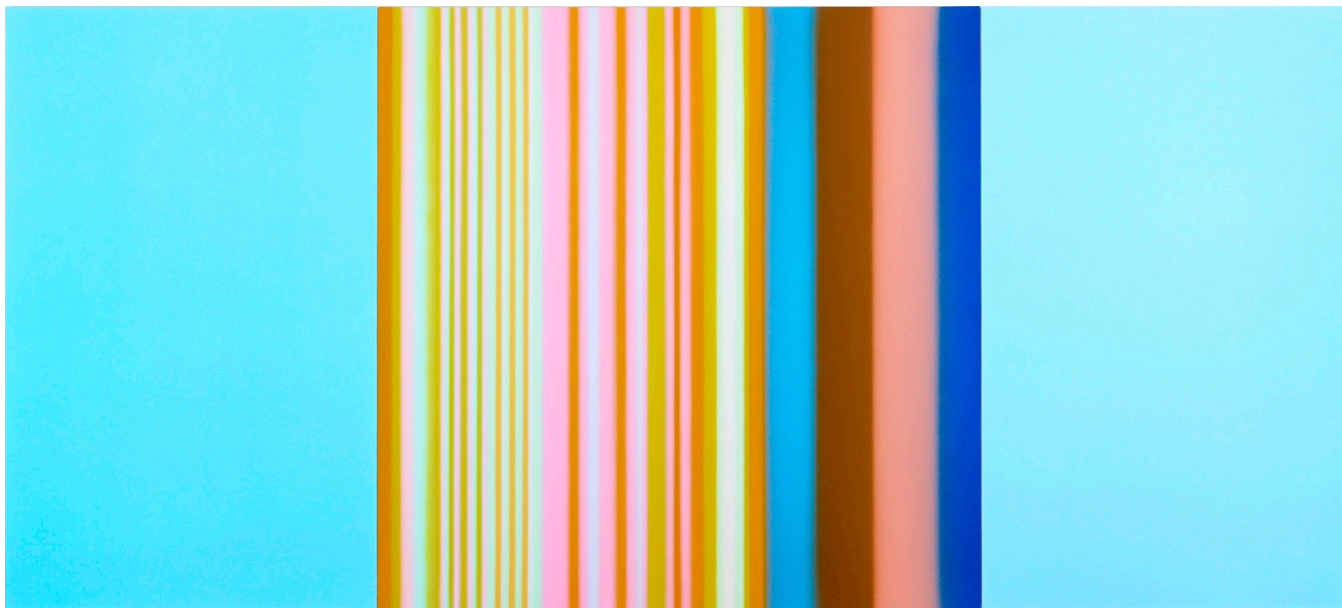


TIM BAVINGTON

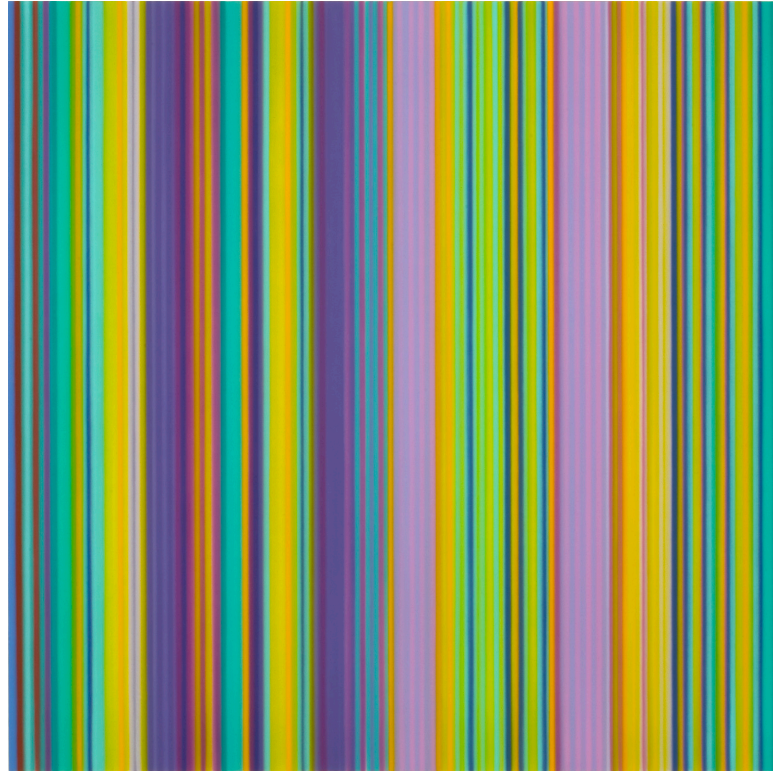
*Up In Suze's Room*

JACK SHAINMAN GALLERY

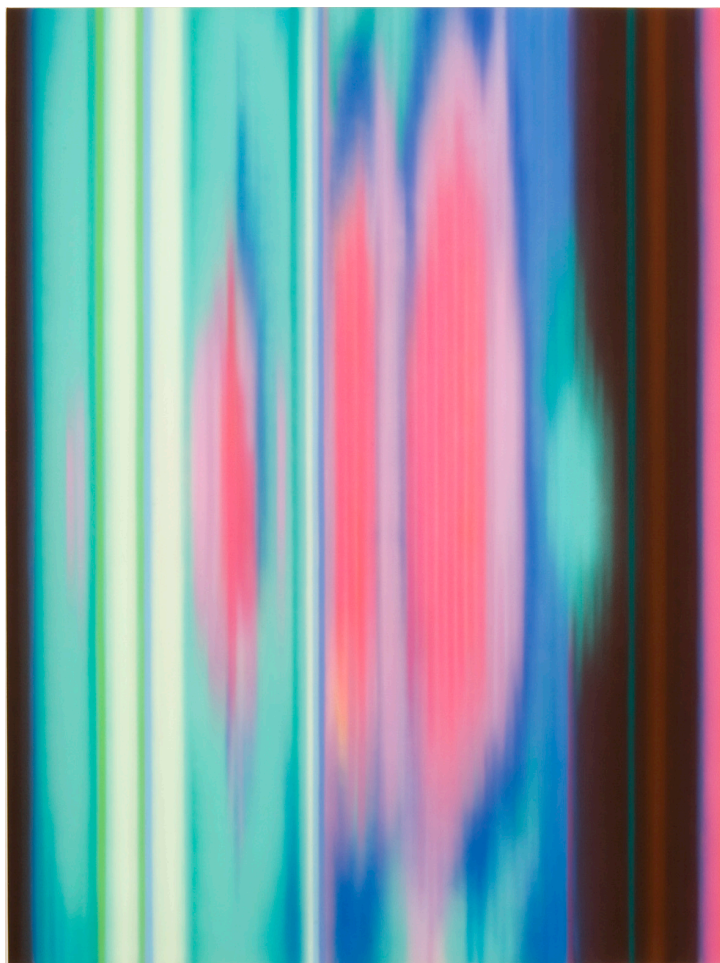
New York, 2009



BEST OF ME / 2004 / synthetic polymer on canvas, triptych / 66 x 152 inches



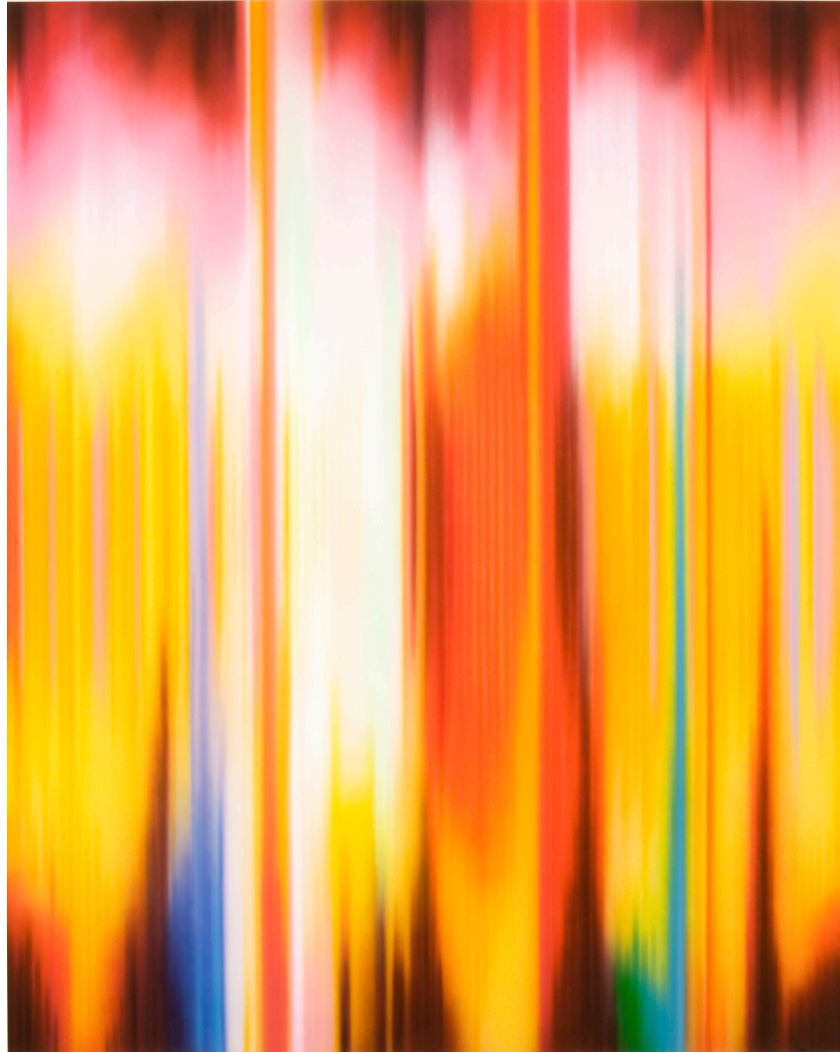
LIVE FOREVER (BE HERE NOW) / 2009 / synthetic polymer on canvas / 72 X 72 inches



COLD FIRE / 2009 / synthetic polymer on canvas / 96 x 72 inches



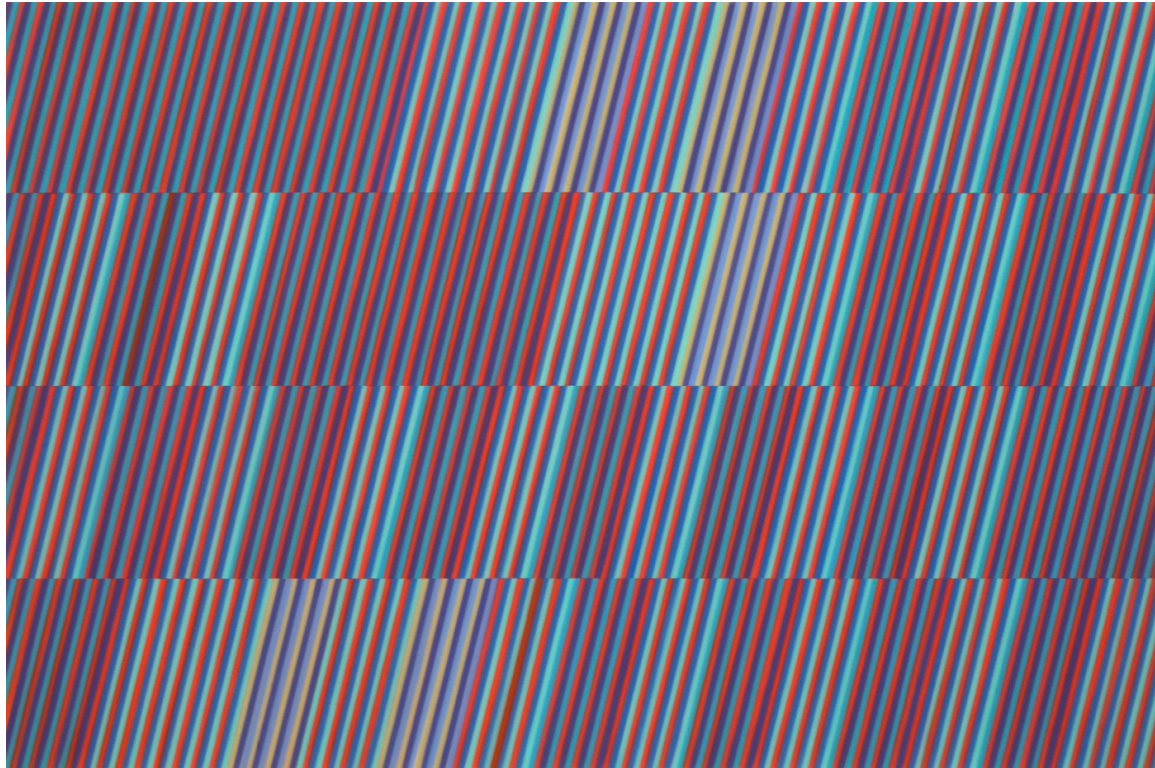
ALL I WANT TO DO IS ROCK / 2009 / synthetic polymer on canvas, triptych / 24 x 225 inches



UP IN SUZE'S ROOM / 2009 / synthetic polymer on canvas / 120 x 96 inches

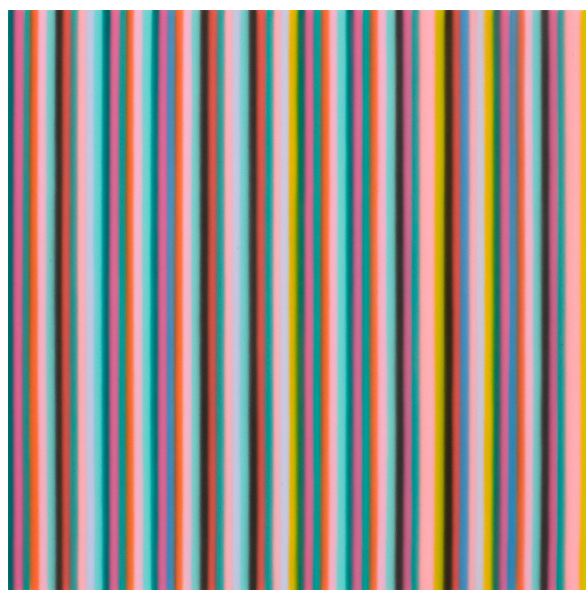


FELL IN LOVE WITH A GIRL / 2009 / synthetic polymer on canvas / 66 X 84 inches



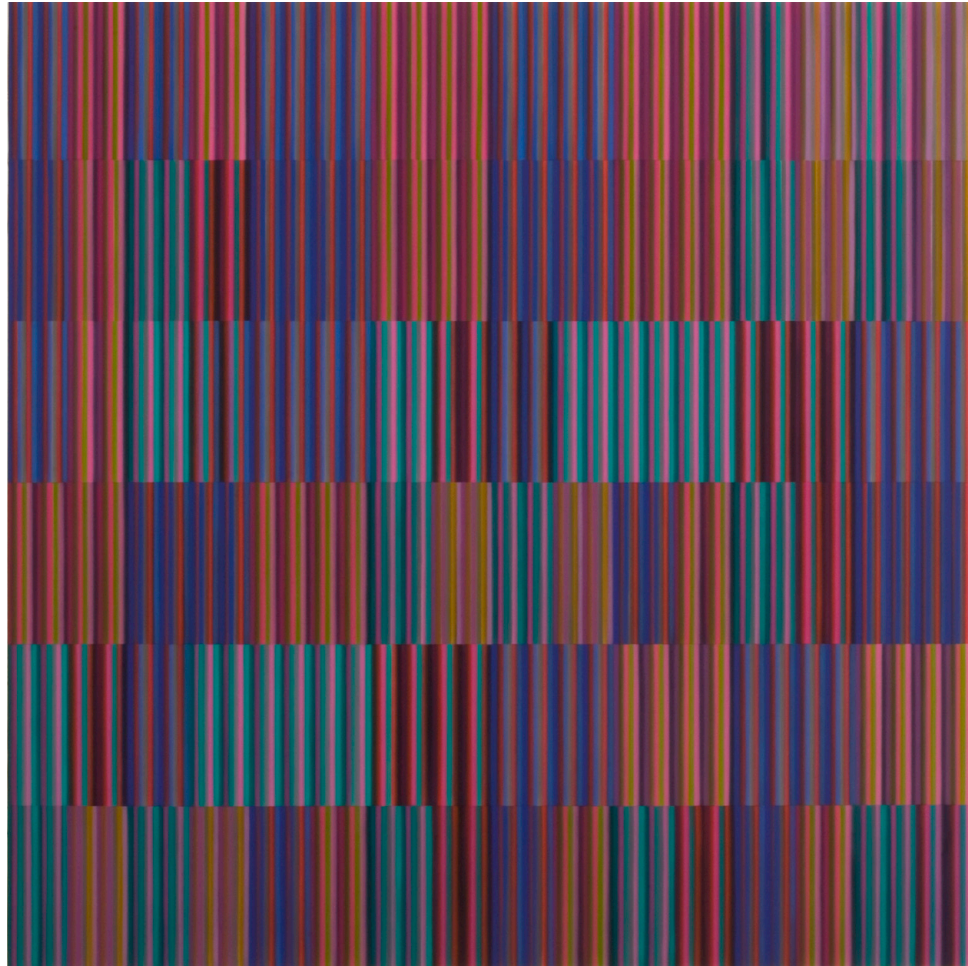
JUDY IS A PUNK / 2009 / synthetic polymer on canvas / 64 x 96 inches





12 BAR BLUES (BG) / 2009 / synthetic polymer on canvas / 36 x 36 inches

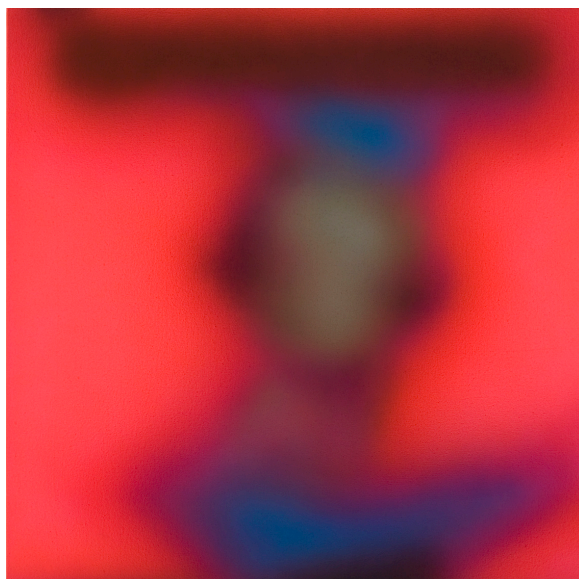




SHE'S THE ONE / 2009 / synthetic polymer on canvas / 96 x 96 inches



WHAT'S THE FREQUENCY, KENNETH? / 2009 / synthetic polymer on canvas / 60 x 60 inches



HAPPY TODAY / 2009 / synthetic polymer on canvas / 36 x 36 inches



INSTALLATION VIEW / 2009 / Jack Shainman Gallery



INSTALLATION VIEW / 2009 / Jack Shainman Gallery



INSTALLATION VIEW / 2009 / Jack Shainman Gallery





INSTALLATION VIEW / 2009 / Jack Shainman Gallery



INSTALLATION VIEW / 2009 / Jack Shainman Gallery



INSTALLATION VIEW / 2009 / Jack Shainman Gallery



INSTALLATION VIEW / 2009 / Jack Shainman Gallery